

# COVET·HOUSE

CURATED DESIGN

# COVET SHOWROOM

A NEW DELUXE DESIGN EXPERIENCE

[WWW.COVETHOUSE.EU](http://WWW.COVETHOUSE.EU)





A **masterpiece** inspired by the organic shapes of nature, **Beyond Console** is a product of the perfect relationship between modern design and craftsmanship.

# COVET SHOWROOM

A NEW DELUXE DESIGN EXPERIENCE

**Covet House** presents its **new 4'000 sqm showroom** featuring a curated selection of **best-selling furniture, lighting, and accessories** in a unique **exhibition** concept.

Next January, a series of **new products** will be presented to the public **for the first time on this new stage.**

[DOWNLOAD HR IMAGES](#)

[CLICK IN THE BUTTON TO BROWSE OUR PRESSLOFT GALLERY](#)

PLEASE, CREDIT ALL USED IMAGES IN YOUR PUBLICATION WITH COVET HOUSE OR COVETHOUSE.EU





Our **inspirational journey** begins on the **first floor** which focuses on **contemporary design**. Different room concepts and lounge areas present a mix of high-quality materials and craftsmanship with modularity and comfort.







**Circu**'s dream is to allow **children** to live their fantasies and create their own **magical world** with limitless imagination.

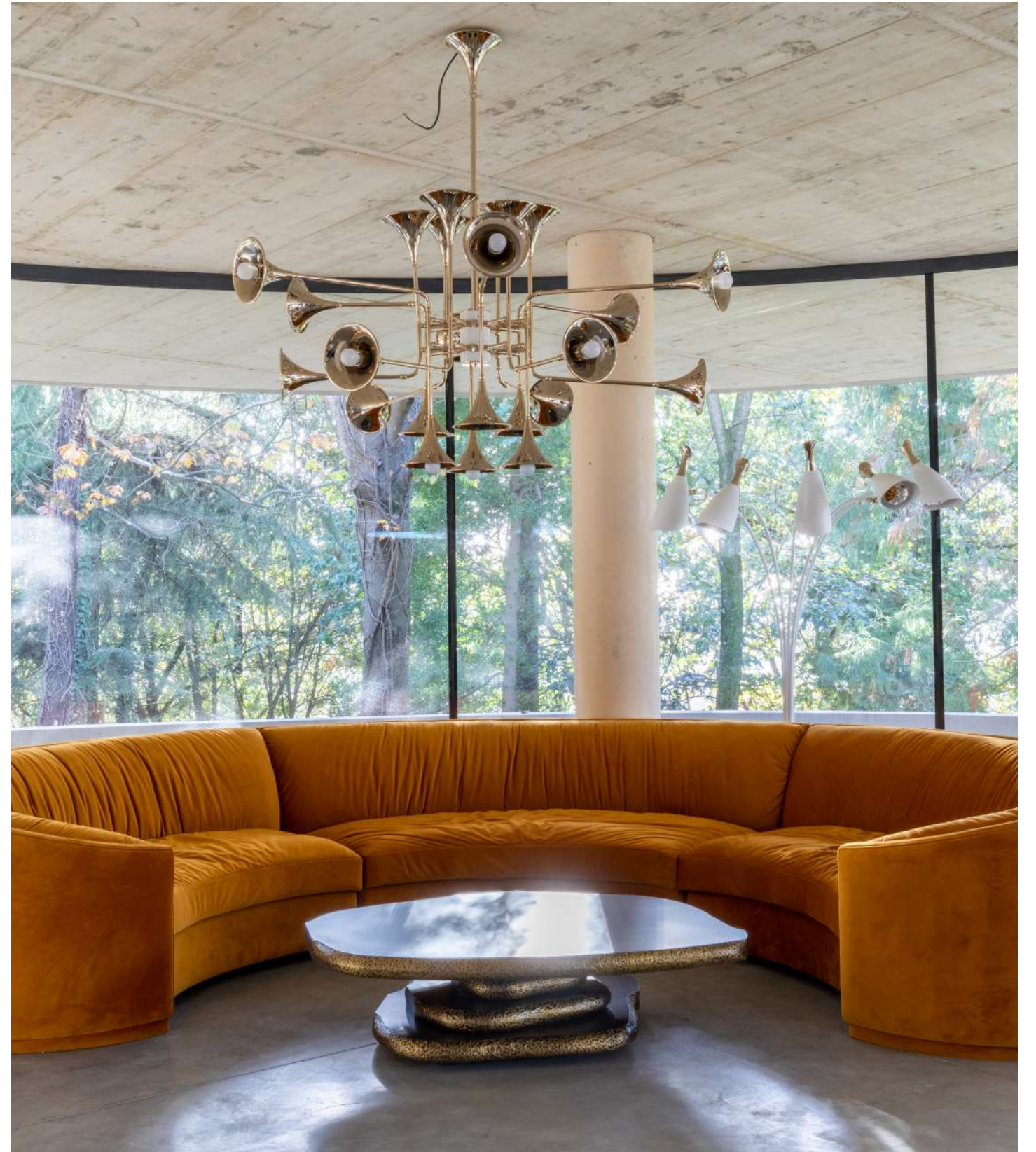


The entire space dedicated to **Circu** was designed as **an authentic kid's room**, with a sleeping area, study corner, and playground filled with colorful, dynamic and functional designs. The Fantasy Air Balloon is one of the most iconic pieces of this magical brand - a themed kids lounge area that evokes the romantic and whimsical ambiance of a hot air balloon ride, quite useful both for fun and educational activities with family or friends.





**Brabbu** is a design brand that reflects an **intense way** of living, bringing fierceness, **strength** and power into an **urban** lifestyle.



Based on nature-inspired shades, **Brabbu** is the ideal reflection of **nature** in all its splendor and **authenticity**. A **versatile** brand, which articulates itself in different spaces of the house, but sees, in the living room, its gravitational point, amplifying comfort and **well-being**. The **Wales Sofa stands out with its comfortable** and sensory design which creates a comfortable experience in any reading corner.





**Maison Valentina** aims to deliver the most **exquisite** and sophisticated **bathroom** furniture. The brand offers high-end solutions made with the **finest** material selection combined with rare craftsmanship techniques, contemporary design and supreme quality.

For Maison Valentina, the bathroom is a **self-care** and pure **relaxation room**. The brand creates beautifully handcrafted designs taking into account functionality and attention to the **smallest details**. Inspired by Jordan's ancient city, the famous **Darian Bathtub provides an outstanding** visual experience with its luxurious black gloss look.





**Covet House** has consolidated its position as the most powerful tool to **inspire** and boost **creativity** over the last few years with thousands of products, inspirations, **materials** and finishes.



The **multiplicity** and **dynamism** of styles and tones suggested by the brand are showcased in an **open space** area, where **dining** and **living rooms** are connected in a subtle but **elegant** way. In fact, **Covet House** embodies the true spirit of **harmony** and **richness** that reigns in any luxury modern home. As clear **statement** pieces, the **Apotheosis Dining Table** and **Moka Dining Chair** are the ideal **portraits** of the comfortable luxury concept that makes **great-value** dreams and projects come true.





**Essential Home** and **Delightfull** represent an innovative **mid-century** modern design concept that uses important **historical** and **cinematographic** references from the 1930s through the 1970s to conceive unique furnishing pieces.

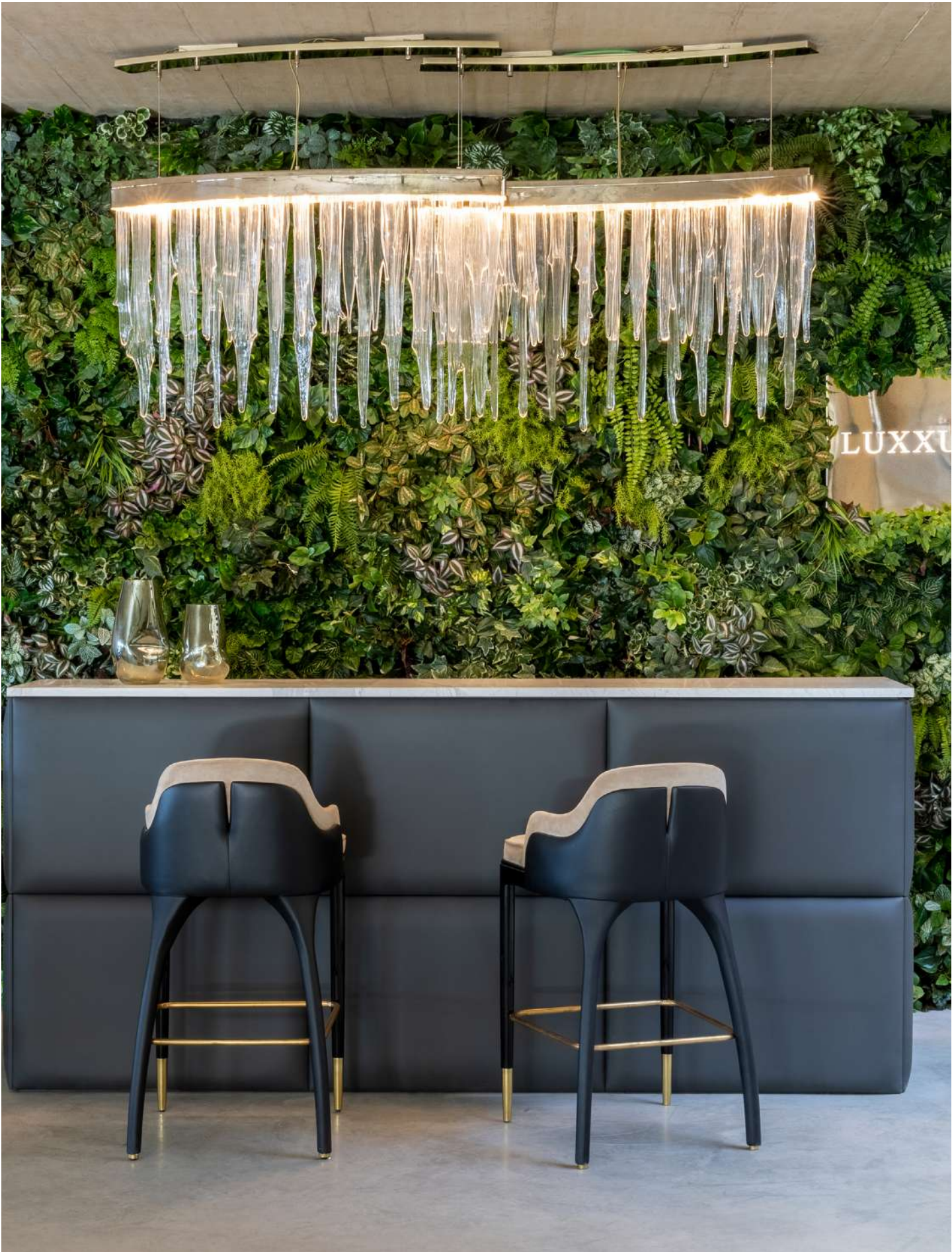


Through **glittering** and **curvilinear** living room designs, the two brands unfold between **past** and **present** in a special and comforting way. The **Fitzgerald modular sofa** and **Ike suspension lamp** quickly grew to be two of the most **elegant** representations of retro and vintage styles, not forgetting the **bold use** of colors and materials of **modern** décor.





Diving directly into a more **opulent** and **sophisticated** world, we find the **dark** and **golden** hues that reflect the power of ostentation and **luxury** in the magnificent modern classic **lower floor**, where the sumptuous presence of **Boca do Lobo** and **Luxxu** stand out.







**Boca do Lobo pays homage to** the most authentic handcrafting techniques, by understanding and **re-interpreting** the past through technology and **contemporary** design.

Designed as an **art gallery**, **Boca do Lobo's space showcases** different **living** and **dining** spaces, where the brand's **exclusive** and **timeless** identity is clearly visible. The precious, high-quality materials make each piece an **icon**, treated with delicacy and pleasure. **L´ Chandelier** and **Lapiaz center table** are precisely inspired and accurately handcrafted with attention to detail, **passion** for beauty, and the pure dedication of skilled craftsmen and craftswomen.





Luxxu's empire is shaping its future by setting trends with **timeless pieces** and **refined elegance**. Lighting was the start of a **luxury** journey, with a **modern classic** tempting twist.



Endowed with extraordinary **innovation** and **design power**, Luxxu revolutionizes and transforms the whole space into an authentic **home**, where the richness of **marble** and the **preciousness** of its pieces shine through. A **new era** unveiled through a mix of both new and best-selling designs, just like a symphony created with one key object: an **everlasting aesthetic** language.



# COVET·HOUSE

CURATED DESIGN

**COVET HOUSE** KEEPS INSPIRING AND CREATING NEW TRENDS.

**WE CREATE. WE INSPIRE.  
WE DELIVER OUR VISION TO THE WORLD.**

Please, credit **ALL USED** images with **COVET HOUSE** or [www.covethouse.eu](http://www.covethouse.eu)

• *NOTES TO EDITORS* •

For more information, projects, interviews, trends and high-resolution images,

*PLEASE CONTACT:*

**DAVID MAGALHÃES | PRESS MANAGER**

Press and Public Relations [press@covethouse.eu](mailto:press@covethouse.eu)

**TAG US IN YOUR ARTICLE / PUBLICATION.  
WE WILL SHARE IT.**

**@covethouse\_**

